

Arboretum & Natural Gardens

S7375 Hwy. 14/61
Readstown, WI 54652
608.629.5553 phone
608.629.5550 fax
ashkapp@mwt.net

Volume 1, Issue 1
Winter News

Spring Class Schedule

| | |
|---------|--|
| May 20 | Build Yourself a Pond! What's new in pond liners, pumps, plants, and pond health with Kim Teed |
| May 28 | Planting for Wildlife |
| June 10 | Ornamental Grasses with Hillsboro designer Craig Chapman |

Classes will be held from 10am-noon at the Arboretum. This is a tentative schedule -please call for more details.

We're More Than Just Another Pretty Place!

Although some folks come to the Arboretum just to stroll the grounds most soon realize our beauty is more than skin deep. If you've never been out our way -or even if you have- we'd like to tell you something about the way we garden and the way we do business.

Natural Growing Methods

It's no secret that the gardening industry has grown tremendously in recent years. Unfortunately, in order to supply this burgeoning demand, many garden centers depend largely on chemical fertilizers, insecticides, and herbicides. Just look at the ads

in many garden magazines!

Here at the Arboretum, we rely on **natural growing methods**, and are constantly educating ourselves and experimenting with what really works. We stock natural fertilizers, soil amendments, and organic herbicides and insecticides.

We offer plants that naturally thrive in our area, those that don't need life support! These are often native plants, and our broad selection of natives increases every year.

Our Own Potting Mix

What's so interesting about potting soil? We make our own consisting of decomposed bark or sawdust, black

silty dirt, super-rich in minerals, and compost made here at the nursery. It is in this beautiful stuff that we pot all of our bareroot trees and shrubs. For our perennials, we add a little peat moss and vermiculite .

What does this mean to the plants? We believe that plants grown in heavier soil transplant much better than plants grown in light soil. Imagine you're a root in light soil, growing like crazy -and then you get planted in our rich, heavy, midwestern garden soil. Would you boldly take off and grow? No, you'd be scared! Plants grown a little slower in heavier soil are just more tenacious, and this results in stronger growing plants for you!

Hardiness Testing

We're addicted plant collectors and have many display gardens where we plant both common and uncommon specimens. In this way we can be of tremendous help to gardeners. Although we don't routinely stock plants outside of our zone 4 hardiness range, we do plant them and can advise you on hardiness based on our experiments. Occasionally we will

start to carry plants that have proven to be hardy in certain microclimates at our farm.

Special Orders

We love special orders. In fact, one of our winter hobbies is poring over our supplier's catalogs, your wish lists in hand, buying plants! In the summer we continue to take special orders, whether it's for that perfect tree, a hedge of highbush cranberries, or a brand new hosta you saw in a magazine.

Landscaping Services

We offer a full range of landscaping options whether you're looking for a quick sketch of a wildlife hedge on the back of an envelope or a complex design and installation at your new home. We enjoy working with people who like plants and want their gardens to work with their lives.

Stop in and look at the photos we have taken of area homes and businesses that we have landscaped over the past few years, and let us help you design your dream.



Welcome to our First Newsletter!

Things are always changing at the Arboretum, especially as a new season gets underway. Expanded gardens, exciting new plants and services, creative landscaping ideas and more.

This first issue of our newsletter and those that will follow throughout the season will help us communicate better with our gardening friends.

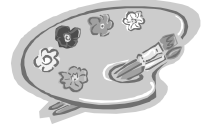
We'd like to thank all of our customers for their business during the past year. We've enjoyed working with every one of you. We also extend greetings to those who are new to the Arboretum. We look forward to getting to know you and your very special garden.

Bill Kappler and Lisa Ashley

New Perennials for 2000

Got enough plant catalogs yet? As you're poring over all the great photos, make lists of your favorites and bring them in. Likely, we have it, or can get it for you -healthier and larger than anything through the mail (and usually cheaper!)

The following are some of the new plants for us, not necessarily new to the world. They are in order of bloom times and not importance!



A palette of perennials?

Delphiniums are so elegant. **Delphinium 'New Millennium Mix'** is reported to be much more resilient to heat and humidity -which is why they thrive in areas like Maine and England, but sometimes aren't happy here. "New Millennium Mix" grows five feet tall with dense, colorful, full rosettes.

Tradescantia "Little Doll" is a dwarf, light blue blooming spiderwort that keeps itself tidily under control -great for edging a bed!

Sisyrinchium bermudianum, or blue-eyed grass, is another wonderful dwarf clumper with blue starred flowers in early summer. The diminutive iris-like foliage is perfect too. This plant is a prairie native, and does quite well here.

Echinacea tennesseensis is another prairie native like the common purple coneflower but this one is quite compact with loads of blooms and continues the show for most of the summer.

The Snakeroot that blooms here at the Arboretum in late summer always attracts lots of attention with its large lacy foliage and fuzzy white spikes. **Cimicifuga simplex "White Pearl"** is very similar, and starts blooming when Cimicifuga racemosa quits in early fall.

With **Phlox**, you can love 'em and hate em'. I love the way they boldly announce their color in midsummer but I'm not crazy about how they get mildew. Many new varieties of phlox don't get mildew though like "**Rosalinda**," "**The King**," "**Nicky**," and "**Natascha**." Very good choices.

We're carrying several new varieties of perennial **Hibiscus** this year -all reported to be hardy to zone 4! Hibiscus "**Old Yella**" has ruffly yellow flowers, "**Fantasia**" is lavender, and "**Kopper King**" has coppery leaves.

Another fantastic addition, one that we have enjoyed in our perennial garden

for a few years now, is **Eupatorium "Gateway"**. This is a Joe Pye Weed that grows just huge with big lilac colored flowers. A butterfly magnet!

Fall-blooming Anemones are great. They're like sturdy old-fashioned roses. **Anemone "Pamina"** is a deep purplish-pink and **Anemone "Honerine Jobert"** is a pure white with a sunny yellow center.

Some dwarf asters that really caught my eye last year are the "Woods" varieties. They bloom for a long time and fill in a wide space, although they don't get over 12" high. This year we'll be carrying **Aster "Woods Light Blue"**, "**Woods Purple**," and "**Woods Pink**."

The Perennial Plant of the Year is **Scabiosa "Pink Mist"**. It's a cheerful plant that blooms the first year and continues all summer. While it's not the kind of plant that has the power to revamp an entire garden like Joe Pye Weed or a sea of Phlox, it's a reliable bloomer for a long time -and looks great with pansies!



Trees and Shrubs

It's a commitment to plant a tree! Every day we help our customers select exactly the right specimen. There are lots of considerations: exposure, soil type, eventual size and land use, not to mention individual likes and dislikes: shape, color, wildlife attraction and rate of growth.

We carry trees and shrubs in all sizes and prices. Small trees can be loaded in your car, pickup truck, or delivered to your home. Large balled-in-burlap trees are more difficult to handle -we recommend allowing our experienced staff to plant them.

And special orders. Every few weeks through the season we go shopping just to handpick trees for our customers. We look for the best specimens at the best prices from a variety of sources specializing in northern grown trees.

Spruce, Pines, and Firs of all sizes too -be sure to check them out!



Free Delivery of Potted Trees in May!

**Mother's Day is
May 14**

Rhododendrons-including the new varieties from Finland
Potted Calla Lilies
African Corn Lilies

and more great ideas!

Sundial Reconstruction of 1999

You could feel it in the house.

On a windy Sunday morning in April 1999, the wires that held the 36' armillary sundial, this ostentatious Vernon County landmark, gave way and it crashed to the ground.

When the frost came out of the ground the guy wires became slightly loose. Factor in the gusty wind, and the teetering was enough to shear a bolt that sent the whole sculpture plunging into the dirt (and the hedge of Belle Poitevine Roses!).

Of course, it had to be resurrected, but how? The reconstruction team assembled: Royce Jones, the original conceiver of the structure who estimated the sundial weighed about 8 tons, Mike Peterson, who defied gravity and bravely shinned up the gnomon* (clearly, "shinning up a gnomon" is not among the usual activities of our neighbor, farmer, tree/corn- hauler!), and Bill coordinated the 80' crane, the size needed to lift such

an enormous piece of metal.

Busy schedules postponed the raising, and so the sundial lay there for most of the summer like a crumpled fallen warrior.

At the end of July all gathered and got the job done without a hitch. We poured a cement platform so this wouldn't happen again. The sundial is here to stay!

*A *gnomon* is the part of the sundial that casts the shadow.

We DO Have Annuals . . .

The addition of the greenhouse in 1999, which was built primarily for propagating and growing on perennials, allowed us to experiment with annuals. And what fun!

If you want flats of marigolds, impatiens, and petunias, well, you may not be interested in the annuals we have to offer. What we do carry are small quantities of hard-to-find annuals, some only available in seed catalogs.

Beautiful colors of nicotiana, cape daisies, phlox, lots of annuals for drying, and so many vines: sweet peas, cypress

vine, hyacinth bean, and cathedral bells are all so wonderful and exotic!

Our annuals, like all of our plants, are not forced ahead to bloom by purchase time, but are grown vigorously and steadily. One must remember that when walking through our greenhouse!

Last June, we started giving away some of the leftover plants. If you were the lucky recipient of free annuals, please let us know how you liked them.

In fact, we'd like to hear from all of our customers. What annuals would you like to buy? If you have special requests

-let us know. We'll start them for you!

Hard-to-find Annuals that you can find here!

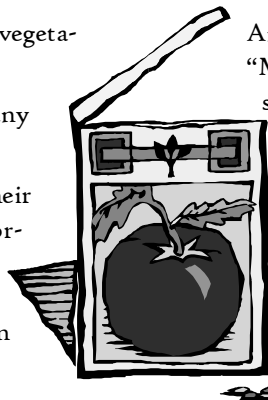
Osteospermum 'Gaiety Orange'
Dimorphotheca 'Glistening White'
Calendula 'Déjà vu'
Phlox 'Mount Hampden'
Pansy 'Contessa'
Datura metel
Antirrhinum 'Cascadia'
Venedium 'Cape Daisy Mix'
and more . . .

. . . And Heirloom Vegetables

By now, most people have heard about heirloom vegetables. Why?

One reason is their taste -complex and rich. Many of the hybrid veggies just don't compare.

Another reason to grow heirloom vegetables is their sustainability. You could keep yourself in food forever! Seed-saving is an ancient craft that is slowly disappearing. In light of new food-producing developments, these old varieties are in danger of being lost.



And then of course are the names. "Black From Tula," "Moskvich," Cherokee Purple," and "Boxcar Willie" sound ethnically rich and delicious, and be sure to try peppers like "Red Peter," "Goat Horn," and "French Lamuyo."

We also offer lettuces, onions, leeks, eggplants, melons, and other vegetables. Call early and we can start your favorite!

Most annuals sell for \$.75 in 2 1/4" pots. Tomatoes and other larger plants sell for \$1.25.

Arboretum & Natural Gardens

S7375 Hwy. 14/61
Readstown, WI 54652
608.629.5553 phone
608.629.5550 fax
ashkapp@mwt.net

Introducing PANSY MONEY -
the best way to earn free plants.
Stop in for details this spring!

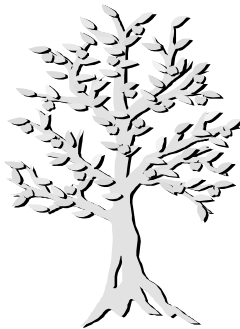


**We recycle
nursery pots!**

Two Locations, Thousands of Branches

Last year was confusing –do I go to the Arboretum, or to the new greenhouse?

We built the greenhouse to protect young perennials from frost and to produce nice looking plants in spring when most people wanted to buy them. It's also a way to propagate perennials which helps keep our prices low.



The greenhouse was built in the only sunny place that was flat, hence the reason it's a half-mile away! You can purchase plants from both places with one check or charge.

Check out the walking path along Read's Creek that connects the Arboretum and the greenhouse. Last year the creek underwent a trout habitat renovation, and this year we will begin planting the area in native species.

This year the greenhouse will be staffed from 9am-6pm Monday-Saturday, and 11am-5pm on Sunday through June. At that time, we may move perennials back to the Arboretum. . . we'll keep you posted.

Go to the Arboretum for

- potted trees, shrubs, roses, or evergreens
- landscaping services
- gift shop in renovated haymow
- enjoying the gardens

Go to the Greenhouse for

- all perennials including alpines, hostas, and woodlands and advice on them
- Annual flowers
- Heirloom vegetable plants
- B & B trees

We're easy to find! Located right on Hwy.14 just 3 miles west of Readstown. The entrance is at the sundial.

